

Fitment of the ASR Component RX2 exhaust flap controller

These instructions are written for an Audi TTRS but will be identical for the RS3 or similar

Operation of the ASR RX2

Primary operation is remote control (with transmitter) of the Valve flaps. Additional benefits are adding memory to the Automatic Stop Start function without the need to change voltage thresholds in coding. The Auto Stop Start switch also doubles as a valve flap control.

Operation is as follows.

Press and hold the Stop/Start switch for 3 seconds until the LED flashes 3 times. Now you will be able to cycle through

- 1 Valves Open (LED on)
- 2 Valves Closed (LED flashes)
- 3 OE Automatic (LED off)

Pressing and holding again for 3 seconds returns control of Auto Stop Start EXCEPT it retains the last setting in memory. You can turn off the ignition and when you restart it will remember your last setting

- 1 Auto Stop Start inactive LED on
- 2 Auto Stop Start **Active** LED off

Again holding down the switch for 3 seconds (LED flashes) will return to valve control

NOTE!!

By pressing and holding the switch for 15 seconds or more (led flashes rapidly) the Auto Stop Start is returned to factory mode and the flap controller is transparent. This may be wanted in some EPA states or when detection of the device is not wanted. To return to flap control hold the switch in for 10 seconds.

Be aware of this function as inadvertent operation of the switch will turn the system off which may lead you to think it is not working

Now to the installation.....

Specialist tools required are trim removal tool and radio removal tool along with various standard screwdrivers and socket set



Trim Removal tool



Radio Release tool

Remove the passenger side end cover plate with a trim removal tool



Lift the foot well cover strip to allow the foot well cover plate to be removed

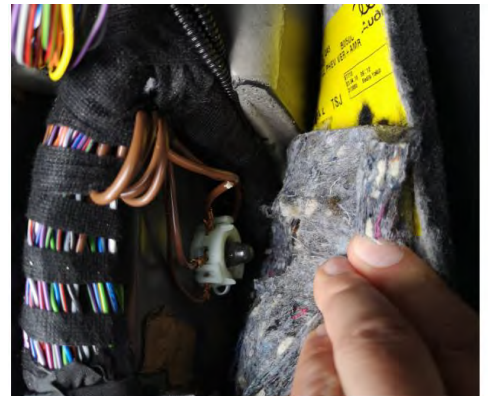


Important A poor or incorrect earth connection will damage the controller. Please adhere strictly to the required fitment in these instructions

Remove the foot well cover and unclip and unplug the connector below



Earth connection location

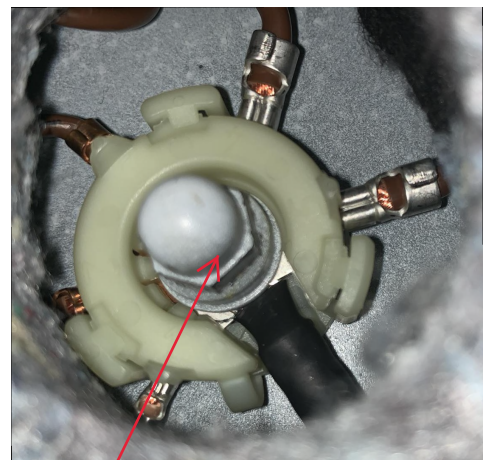


IMPORTANT

Before disconnecting any plugs connect the ground ring terminal on the ASR wiring loom to the multiple OE ground connection point, This is located just near the start of the door sill and has multiple common brown ground wires connected through the chassis via a bolt, fit the ground ring terminal here and make sure you refit the nut/cap firmly

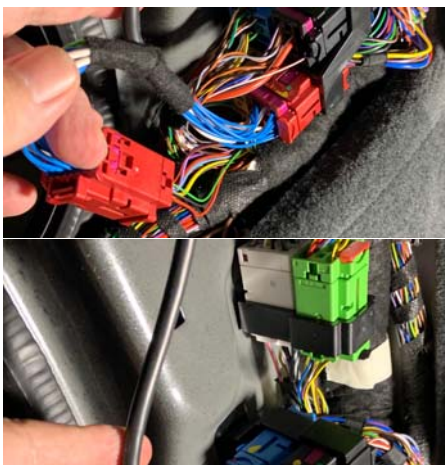
ASR Earth ring terminal must be placed against other bare ring terminals for a solid earth connection

When fitted replace plastic cap and capnut Tighten thoroughly

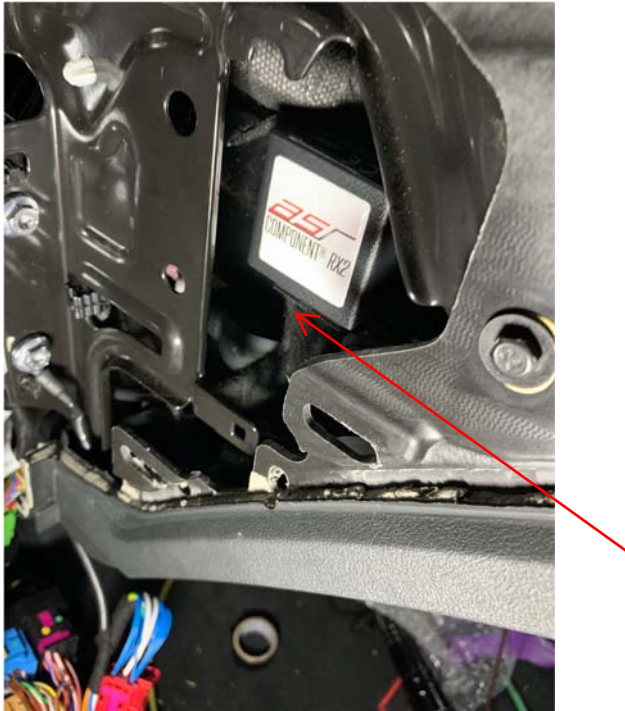


Remove Capnut and open plastic barbs, connect ASR earth to

Plug the RX2 connector into the factory socket and reconnect the factory plug into the RX2 socket



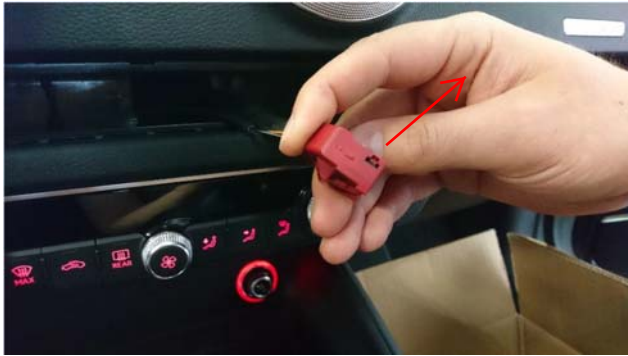
Now make sure the terminal block is securely plugged in to the RX2 controller and secure the RX2 box to the side of the glove box



Now time to remove the switch panel strip connector using radio removal tools (available Jaycar) and shown with red arrows. Note the straight side of the tool faces toward the outside of the switch strip on each side. Once the tools are in place the switch array will come out

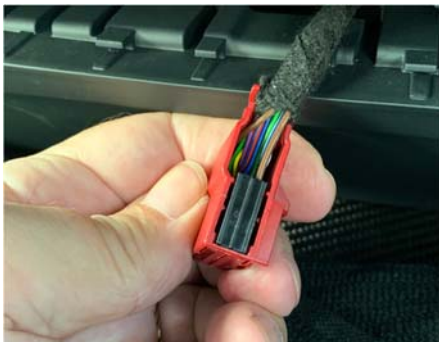


Next remove the red connector from the back of the switch array, there is a push down tab underneath that needs pressure inwards to withdraw the connector, now is the time to connect the wire harness supplied to the RX2. This then routes through the glovebox cavity and out of the switch array cavity. A fibreglass rod or insulated rod will assist to route this harness wire through



Push the tag upwards as per the arrow showing This will release the black interior housing connector **Take a photo of the terminal socket both sides for later reference if needed**

When you have retrieved the wire harness end there are a brown and red wires with exposed terminals and a green and yellow wire in a 2 terminal socket next you will need to remove the red housing from the harness to access the terminal pins in the harness. The housing can be released by using a small blade screwdriver to push the tab upwards as shown into the small cavity so the socket can be withdrawn from the housing. You will need to unwind the tape covering the housing barrel to allow the socket to be removed, this only requires the barrel uncovered. See above



NOTE the pin numbers starting 11-20 this side, 1-10 the other side

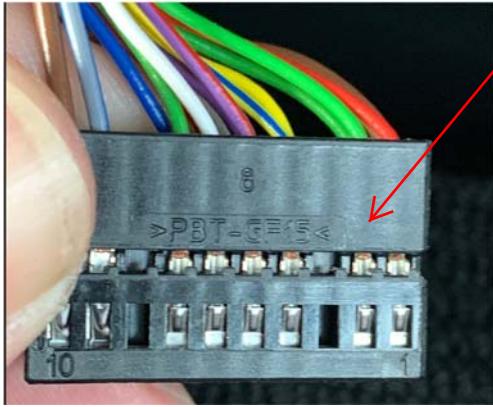
With a small blade screwdriver push the tab down on position 12 and withdraw the **green/yellow** wire. Next you will be pushing the wire in to position 1 (marked) into the 2 pin Blank housing supplied.

Then push the **RED** wire from the RX2 harness back into position 12 on the connector where you removed the green/yellow

Now remove the **green/white** wire from position 2 in the connector and push it in position 2 in the 2 way blank housing supplied

Last push the **brown** wire from the RX2 harness back into position 2 on the main connector.

Then plug the 2 pin connector into the 2 pin socket on the harness. This will divert the signal from the car Via the RX2 and back to the Auto stop start switch



Remove and place in position 2 on 2 way connector, then insert the brown wire from the RX2 harness



When all done replace the factory socket back into the red housing making sure it locks in place

Reconnect the socket to the back of the switch array and push the switch panel back into the factory position

Before replacing all the panels check your wiring and start the car. Test the remote control for flap operation and test the switch operation described in the introduction